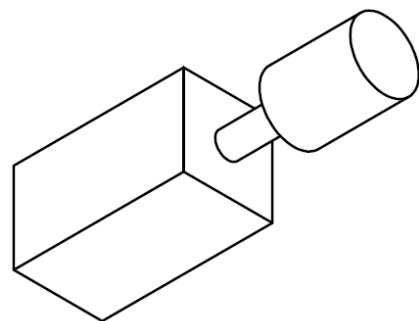
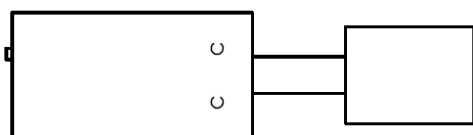
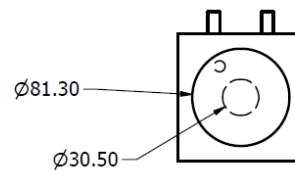
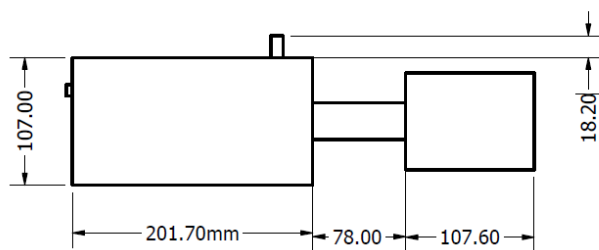


Overview of the alpha camera:



The 3D dimension of the system (unit: mm):



| | |
|-----------------------------------|--|
| Power requirement: | 100 - 240 VAC, 50 - 60 Hz |
| Weight: | 5 Kg |
| Cooling: | Build in air cooling, or external water cooler |
| Detection limit (1m, 10 minutes): | 3kBq in UV-free environment 100kBq at night 3MBq under indirect sunlight |
| Optimised detection distance: | 1m |
| Angular field of view: | 7.2 Degree |
| Resolution: | 128x128 |